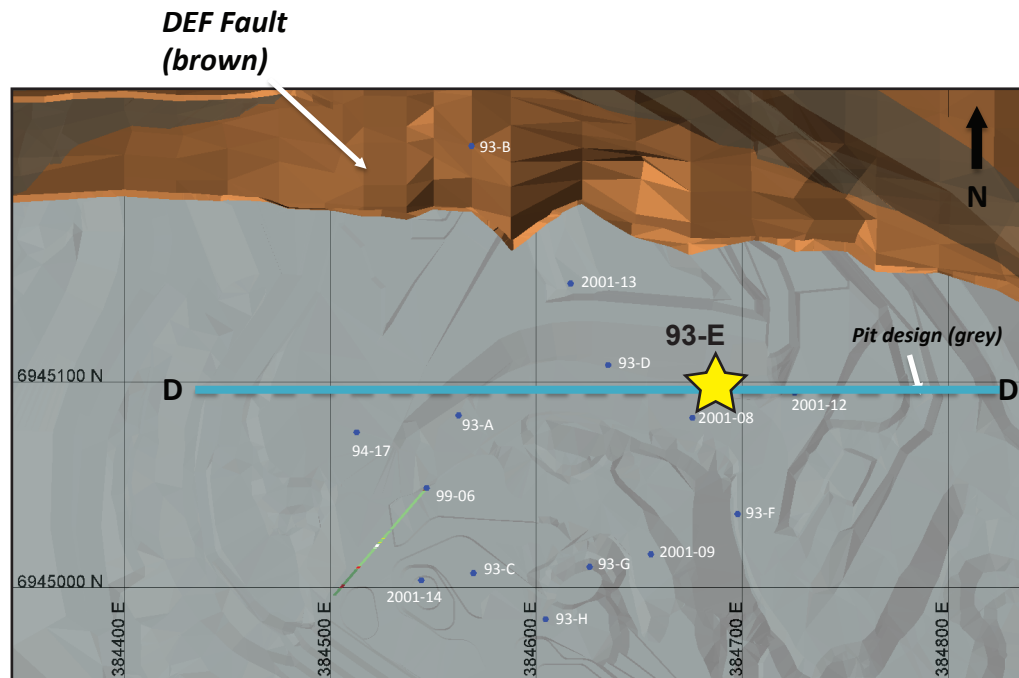


Minto deposit (Yukon MINFILE 115I 021, 022)

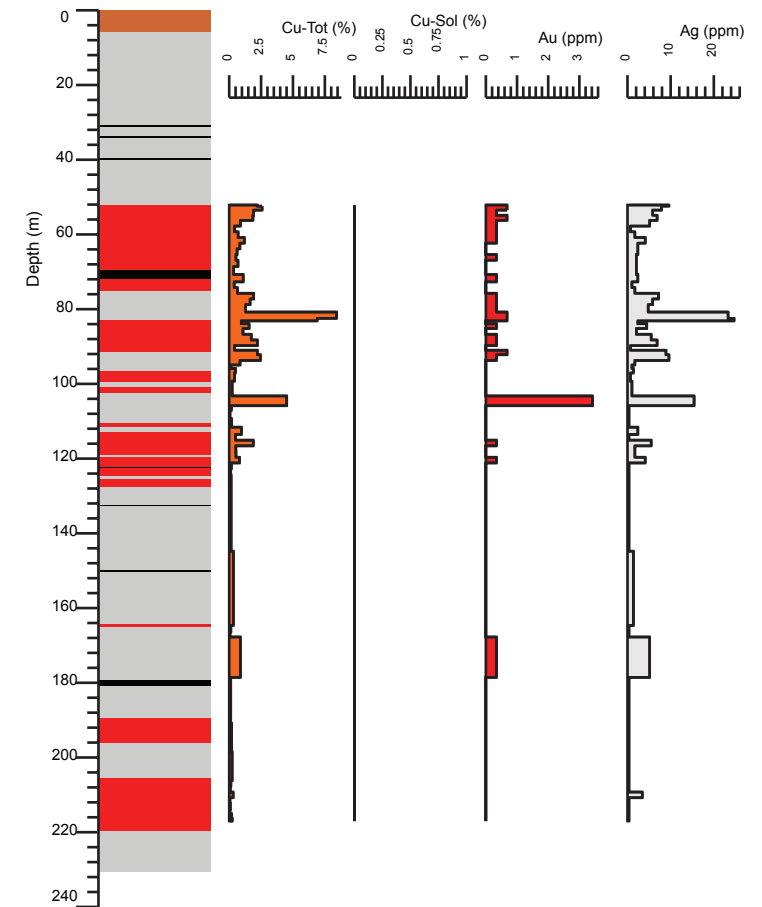
Drill Hole: 93-E, Minto Main deposit

Area	Hole No.	Azimuth	Dip	Length (m)	Collar coordinates (NAD83, Zn 8)
Minto Main	93-E	0	-90	230.73	384690mE, 6945095mN



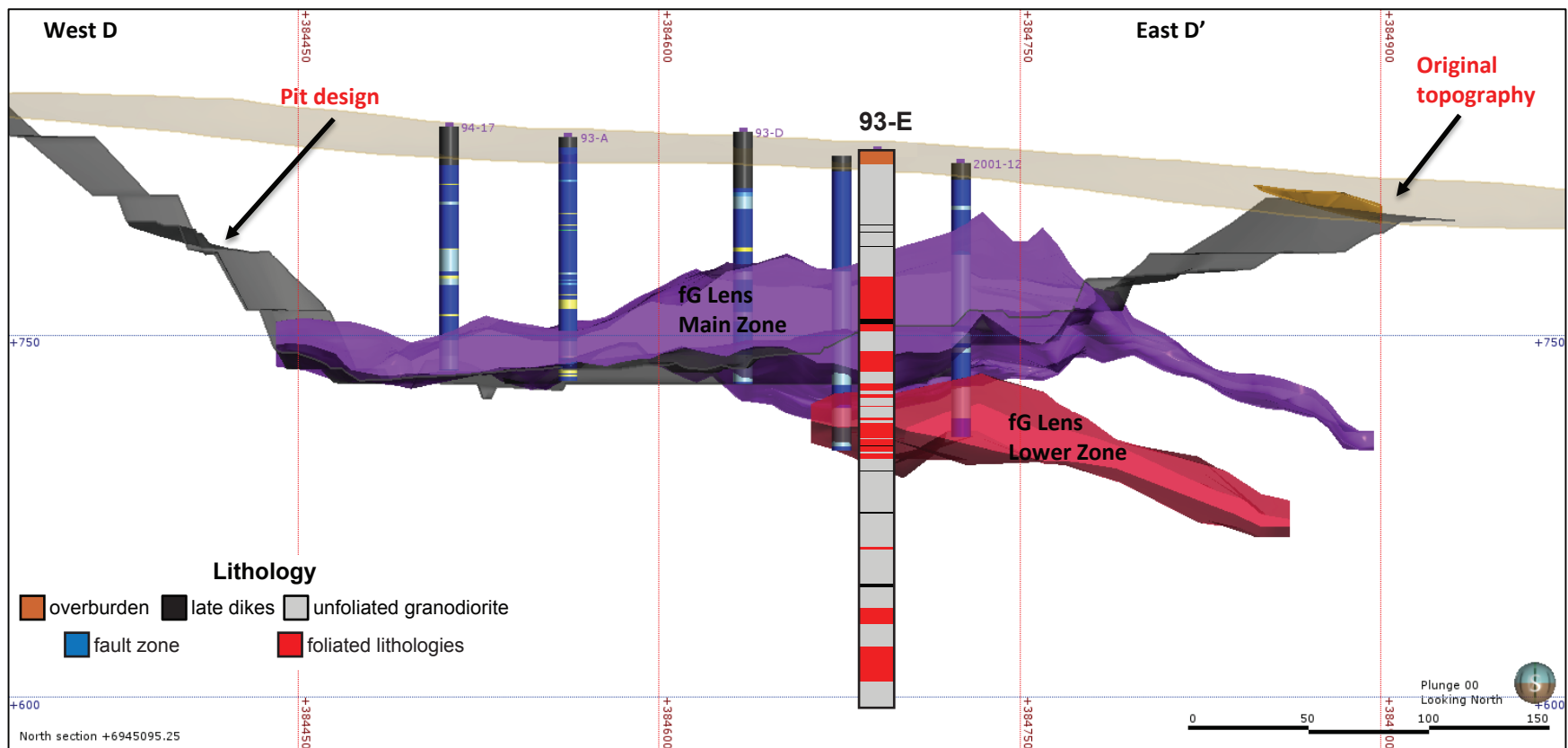
Above: Orthophoto of Minto area. Collar location of 93-E shown by yellow star, blue circles show collar locations of other drill holes in YGS collection.

Right: Simplified strip log with selected assays.



Lithology

- overburden
- late dikes
- unfoliated granodiorite
- fault zone
- foliated lithologies



Above: Simplified vertical east-west cross-section through the Minto Main pit.

Right: Selected assays through Minto Main lower zone. Cu - Tot = sulphide and non-sulphide copper, Cu-Sol = non-sulphide copper

Hole	From (m)	To (m)	Interval (m)	Sample	Cu (%)	Cu-Sol (%)	Au (ppm)	Ag (ppm)
93-E	74.98	76.5	1.52	4667	0.6	0.0	0.0	1.7
93-E	76.5	78.03	1.53	4668	1.9	0.0	0.3	7.2
93-E	78.03	79.55	1.52	4669	1.6	0.0	0.3	5.8
93-E	79.55	81.99	2.44	4670	1.3	0.0	0.3	4.8
93-E	81.99	82.91	0.92	4671	8.4	0.0	0.7	23.3
93-E	82.91	83.36	0.45	4672	6.9	0.0	0.7	24.7
93-E	83.36	84.43	1.07	4673	1.0	0.0	0.0	2.4
93-E	84.43	85.95	1.52	4674	1.6	0.0	0.3	4.5
93-E	85.95	87.48	1.53	4675	1.1	0.0	0.0	2.1
93-E	87.48	89	1.52	4676	1.7	0.0	0.3	5.5
93-E	89	90.53	1.53	4677	2.2	0.0	0.3	6.9
93-E	90.53	91.44	0.91	4678	0.4	0.0	0.0	0.7